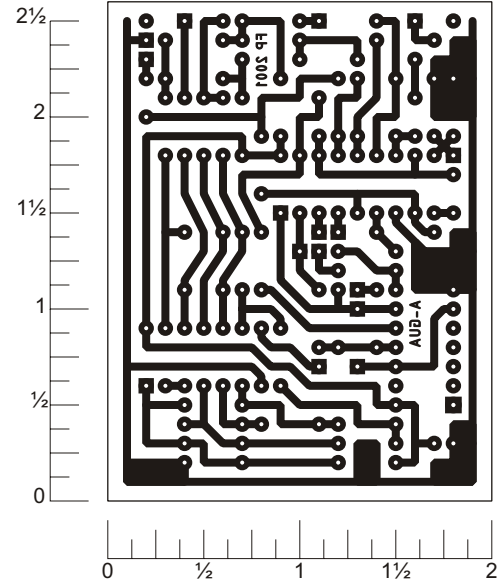
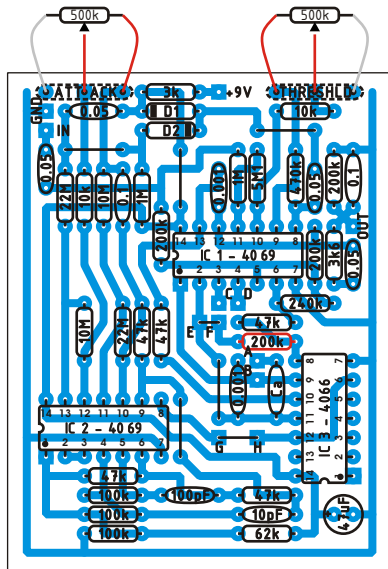


The MXR Envelope Filter can be built on this board. Pads A-H are for mods, the layout is populated as the stock MXR-EF. Off board components except for the potentiometers are not shown on the layout. Trademarks are property of their owners.



Layout and presentation by Francisco Peña 2001 2002®.
All rights reserved. Authorization for personal use only.
any commercial use is forbidden.
Permission for posting/serving limited to
<http://www.tonepad.com>
Permission refused for posting from other sites.

Parts List

Resistors

R1 - 3k6	R12 - 200k	R23 - 47k
R2 - 200k	R13 - 240k	R24 - 22M
R3 - 10M	R14 - 62k	R25 - 47k
R4 - 3k	R15 - 10M	R26 - 47k
R5 - 10k	R16 - 100k	R27 - 500k pot
R6 - 5.1M	R17 - 1M	R28 - 500k pot
R7 - 200k	R18 - 47k	
R8 - 1M	R19 - 200k	
R9 - 22M	R20 - 100k	
R10 - 10k	R21 - 100k	
R11 - 470k	R22 - 47k	

Capacitors

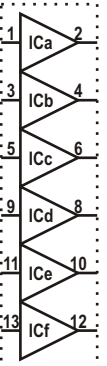
C1 - 0.1uF
C2 - 0.05uF
C3 - 0.05uF
C4 - 0.1uF
C5 - 0.05uF
C6 - 0.001uF
C7 - 0.001uF
C8 - 100pF
C9 - 0.05uF
C10 - 10pF
C11 - 47uF

Diodes

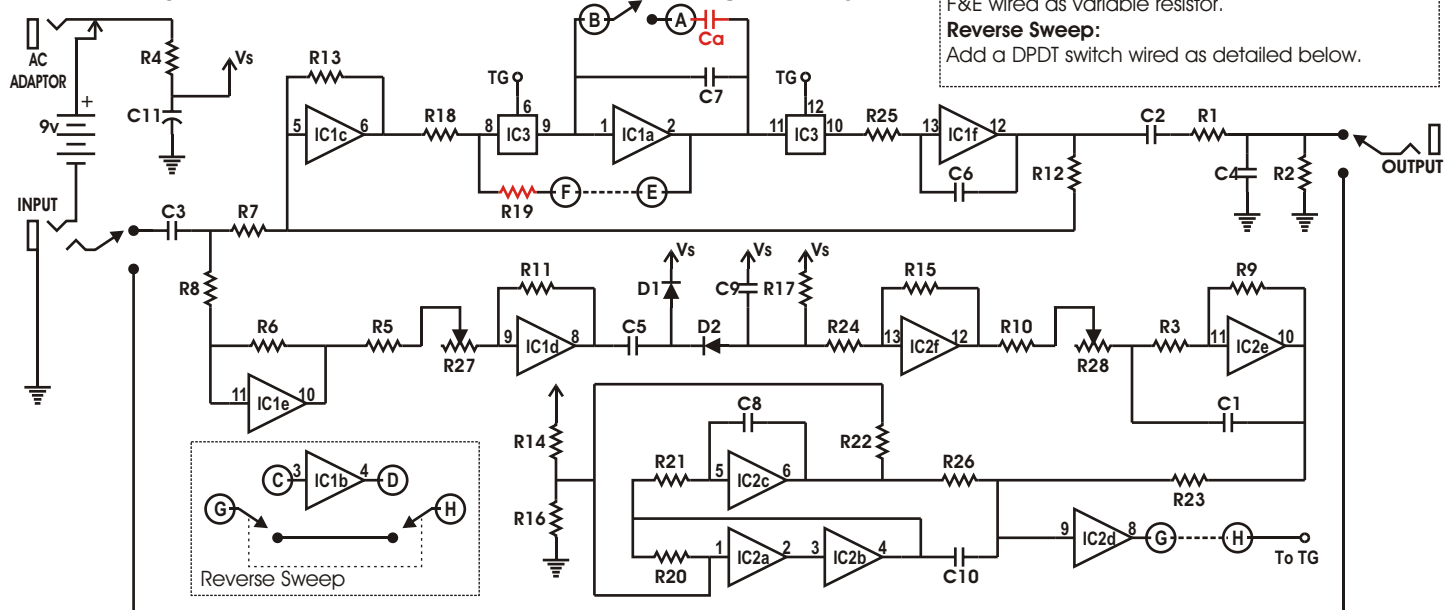
D1 - 1N914
D2 - 1N914

ICs

IC1 - CD4069
IC2 - CD4069
IC3 - CD4066



Schematic



Filter range mod:

Add capacitor Ca (470pF), change C7 to 560pF and add a SPST switch between A&B.

Emphasis control:

Change R19 to 47k and add a 500k pot between F&E wired as variable resistor.

Reverse Sweep:

Add a DPDT switch wired as detailed below.