

SpaVIC Quick Start Guide

Version 1.0

Publish on 07/05/2007

Copyright

Copyright 2004,2005,2006,2007 AutumnTECH, LLC

All rights reserved. Printed in the U.S.A.

This manual and any associated artwork, software and product designs are copyrighted with all rights reserved. Under the copyright laws such materials may not be copied, in whole or part, without the prior written consent of AutumnTECH, LLC. Under the law, copying includes translation to another language or format.

Printed copies

For printed copies of this manual, order part number SFH/ManDoc (P/N 9980-0001)

Mail request for printed copies to the address above. Include a \$15 shipping and handling fee payable to AutumnTECH, LLC

Getting Started

Requirements

Hardware Requirements

- 256 MB Free Physical Memory
- 40 GB Of Hard Drive Space
- Monitor, Keyboard, Mouse

Software Requirements

- Windows/Linux Operating System
- VMware Player (version 1+)
- SpaVIC
- Syslog Server
- Internet Web-browser
- E-mail clients that supports HTML formatting
- Real Simple Syndication (RSS) Reader

Before You Begin

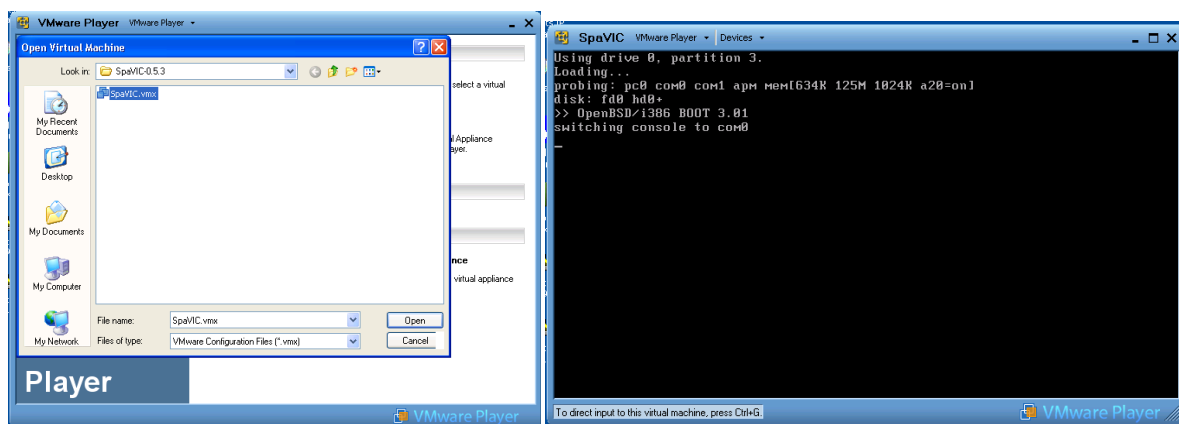
The goal of SpaVIC was to develop an application that could be distributed across operating systems within a virtual environment. SpaVIC will generate digestreports that contain all of the inbound e-mail addressed to a recipient over a default or customized period of time. The digestreport contains hyperlinks which will allow the recipient to release or “keep” e-mail. Once released, the sender’s domain, e-mail server, and e-mail server’s DNS reverse-lookup hostname are trusted to that recipient from that point forward.

SpaVIC blocks 100% of inbound e-mail, 100% of the time, delivering only trusted e-mail learned from history. Recipient’s release or “keep” e-mails by requesting their digestreport via an e-mail message to digestreport, the web, or through an RSS feed. Digestreports contain e-mail history that returns queued e-mail that has arrived within the past 5 minutes, 30 minutes, 1 hour, 4 hours, and 12 hours. The default timeframe can be changed through Webtility > Advanced > Update Configuration Settings.

SpaVIC is not a statistical filter; SpaVIC delivers e-mails based on facts about the sender and the trust trained through recipient release requests. Thus, SpaVIC does not rely on the probability through a static rule set or through the use of training based on the header or body of an e-mail. By removing the need to examine e-mail content for matches based on signatures and rules, SpaVIC becomes immune to future unwanted e-mail sent from sources not trusted.

Starting SpaVIC

- Install VMware player
- Extracted the SpaVIC zip file
- Start VMware Player
- Browse to and open SpaVIC.vmx
- Examine the output to VMware Player



Configure SpaVIC

Webtility

- Default URL: <https://192.168.200.249>
- Default Username: *admin*

- Default Password: *password*

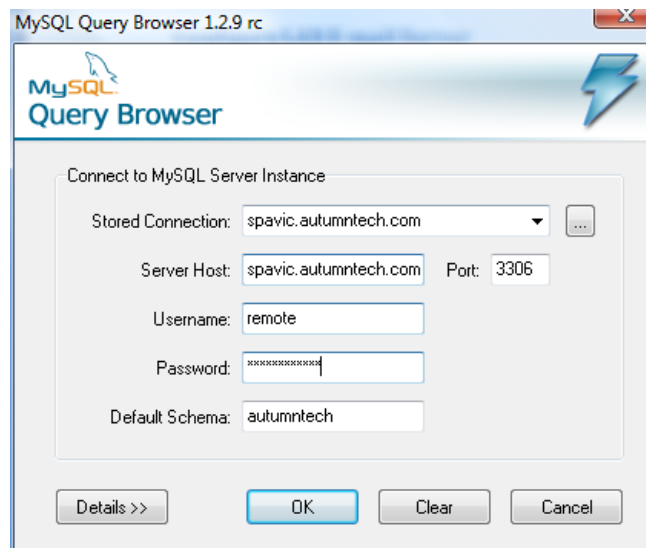


Setup

- Date and Time - General > Date and Time Tool
- E-mail Notifications - General > E-mail Notifications
- Network Settings including Hostname - General > Network Settings Tool
- Webtality Admin Password – General > Update Passwords
- Syslog Log Output – General > Logging Settings
 - Download/Install/Start Kiwi Syslog <http://www.kiwisyslog.com>
- Add Relay/Filtered Domains – Advanced > Update the E-mail Engine's Relay Lists
- Configure LAN E-mail Servers – Advanced > Set Final Destination E-mail Servers

Accessing the MySQL Database

Administrators can access the SpaVIC storage database through the MySQL query client. The SpaVIC database is called *autumntech* the table is called *tbl_rstorage* and can be attached to using the username: *remote* and password: *remoteselect* Access is granted on a select-only basis, you are NOT allowed to add, update, or delete records.



MySQL Query Browser - Connection: spavicautumntech.com / autumntech

File Edit View Query Script Tools Window Help

SELECT * FROM tbl_rstorage t;

Resultset 1

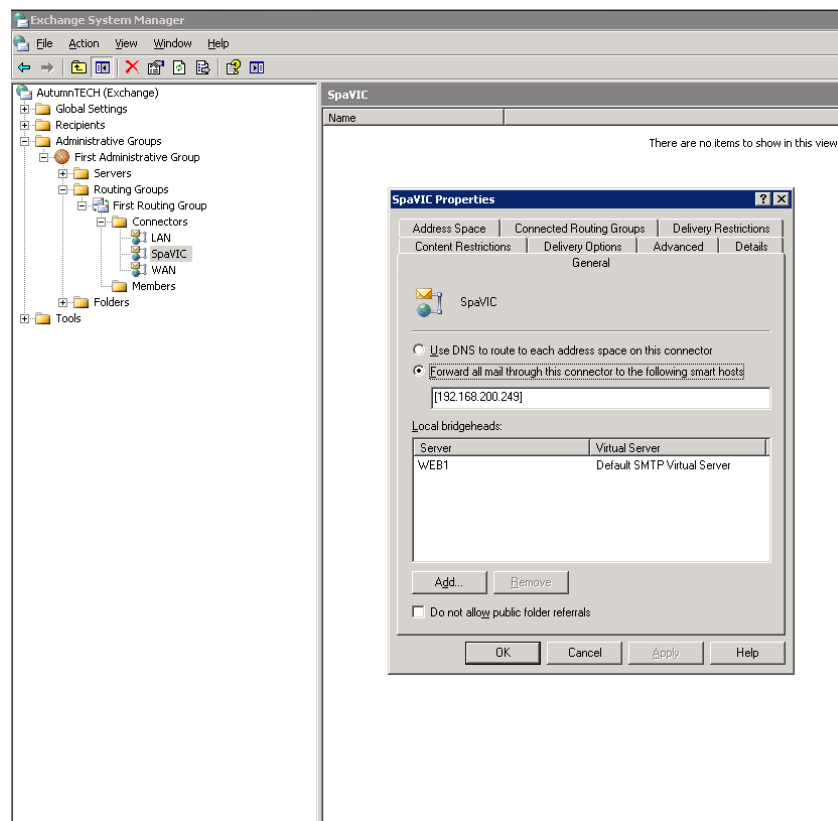
rtstorageid	xdatetime	xsender	xrecipient	xcip	xhostname
4	2007-06-15 06:20:54	root@mailer.strausnradio.com	tbodyer@autumntech.com	68.163.73.41	static-68-163-73-41.res-east.veriz...
11	2007-06-15 06:23:10	puplatform@prudentialcanthiers.com	tbodyer@autumntech.com	66.150.143.203	hou1bb.ereally.com
15	2007-06-15 06:24:36	root@autumntech.smolderplevy.com	tbodyer@autumntech.com	72.44.155.218	gateway.smolderplevy.com
18	2007-06-15 06:25:16	root@bmailhub.viggoold.com	tbodyer@autumntech.com	65.95.92.34	65-95-92-34.client.dsl.net
19	2007-06-15 06:26:19	SamPhanomsouvana@GreenCoutePartners.com	tbodyer@autumntech.com	69.20.195.34	mail.greencountepartners.com
20	2007-06-15 06:26:59	root@bmailhub.pragemoving.com	tbodyer@autumntech.com	65.105.247.69	65.105.247.69.pt.us.xo.net
21	2007-06-15 06:26:59	JSteen@pragemoving.com	tbodyer@autumntech.com	65.105.247.69	65.105.247.69.pt.us.xo.net
27	2007-06-15 06:29:57	root@bmailhub.hemanagency.com	tbodyer@autumntech.com	66.134.10.91	h-66-134-10-91.chcglm.covad.n
30	2007-06-15 06:31:10	lrm@gcorp14.link-synergy.com	tbodyer@autumntech.com	63.123.248.14	gcorp14.link-synergy.com
35	2007-06-15 06:31:57	lrm@gcorp14.link-synergy.com	tbodyer@autumntech.com	63.123.248.24	gcorp14.link-synergy.com
39	2007-06-15 06:33:29	Administrator@ovalonvms.com	tbodyer@autumntech.com	63.117.22.5	5-22-117-63-pt.wirelesshelp.com
41	2007-06-15 06:34:09	root@bmail01.mmcacby.com	tbodyer@autumntech.com	205.179.82.37	mail.mmcacby.com
42	2007-06-15 06:34:11	root@bmail.msdirectinc.com	tbodyer@autumntech.com	71.16.78.115	unknown
44	2007-06-15 06:34:25	info@netflix.com	tbodyer@autumntech.com	206.75.76.252	mx-eom.netflix.com
46	2007-06-15 06:35:15	root@bmail01.apertureservice.net	tbodyer@autumntech.com	63.117.22.15	15-22-117-63-pt.wirelesshelp.com
52	2007-06-15 06:35:47	root@span105.ocmail.net	tbodyer@autumntech.com	207.246.254.105	ocmail.net
53	2007-06-15 06:35:47	root@span105.ocmail.net	tbodyer@autumntech.com	207.246.254.105	genie-catalyst.com

Schemata Bookmarks History

autumntech
tbl_rstorage
information_schema

Configure LAN E-mail Server

You must configure your LAN e-mail server's ability to send e-mail to the SpaVIC server. Typically this is accomplished through the use of DNS MX records, however, many e-mail servers have the ability to route e-mail destined to a domain through the use of SMTP connectors such as those found in Microsoft Exchange server.



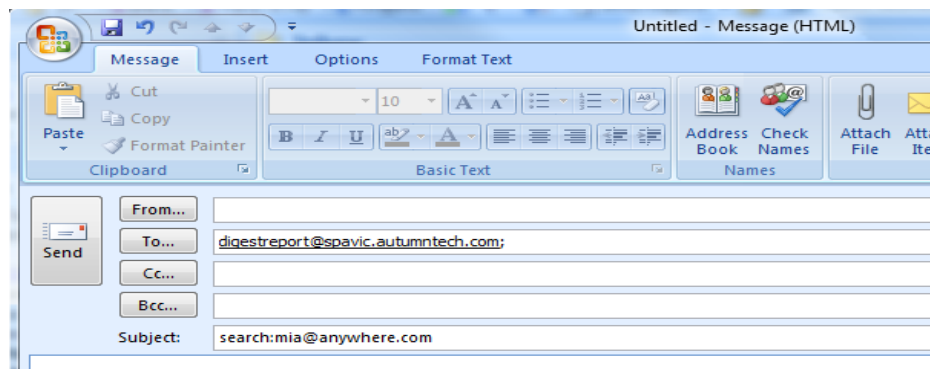
Create an e-mail contact called "Digestreport" in the Global contact list that is addressed to `digestreport@(thespavichostname)` this will allow recipients the ability to request reports by selecting a global contact name. Remember, the more training about SpaVIC, the easier it'll be to adopt across your organization.

Configure Inbound E-mail Traffic

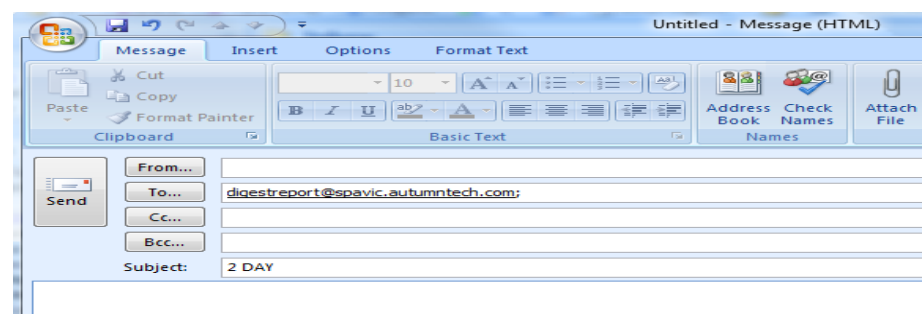
Change your inbound firewall access control rule for SMTP TCP port 25 traffic from your LAN e-mail server to SpaVIC. By default, only the complete hostname and domain name specified in the network settings are allowed to relay through the SpaVIC instance. Use Webtility > Advanced > Update the E-mail Engine's Relay Lists to add additional domains to the relay and filtered lists.

Generating SpaVIC Queue Requests and Reports

Digestreports can be requested with a timeframe interval and searched by specifying the text *search:* in the subject line of a digestreport request e-mail. In addition, SpaVIC systems Administrator's have the ability through the SpaVIC web-based administrator "Webtility" to alter the default time interval.



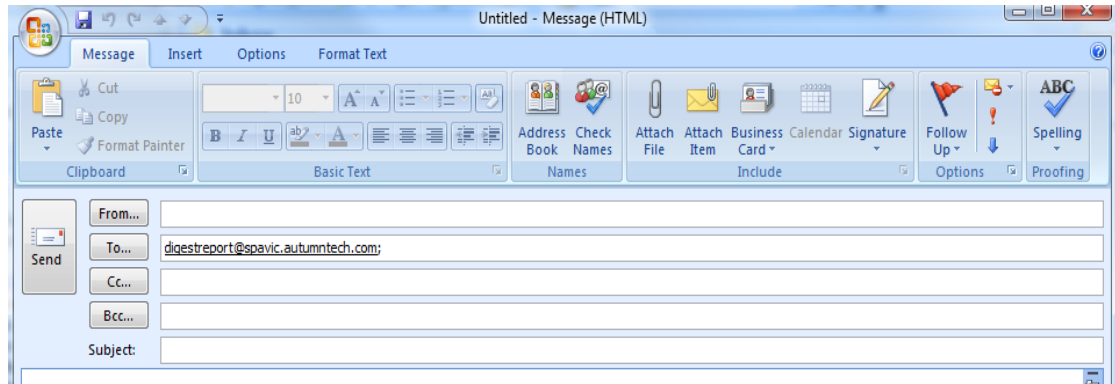
In addition, digestreport requests can contain everything in the queue from a specific timeframe. Recipients simply put a numeric value + MINUTE, HOUR, DAY, WEEK, MONTH, or YEAR alone in the subject line to return everything up to the point specified. IMPORTANT DO NOT INCLUDE a trailing "S" the time frame requests such as 2 DAYS, the request will fail.



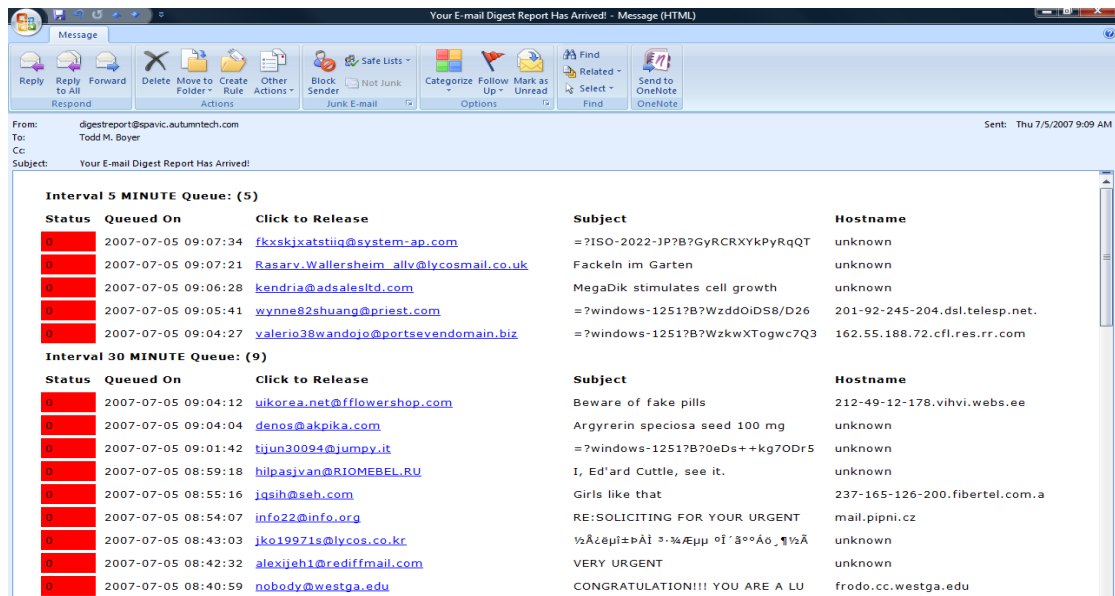
User Requesting Through E-mail

Recipients can request their SpaVIC queue digestreport in several ways.

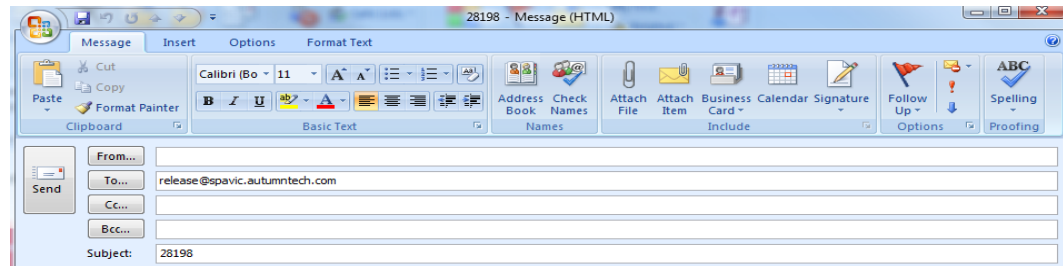
1. Compose an e-mail to `digestreport@(thespavichostname)`



2. A e-mail addressed from digestreport will return, and will appear similar to the following:



3. Recipients click on the sender's e-mail address to compose a new e-mail to `release@(thespavichostname)`



The e-mail will then be delivered without delay. In addition, new e-mail arriving from this sender's domain, from the sender's e-mail server will deliver without delay in the future.

User Requesting Through RSS Feed

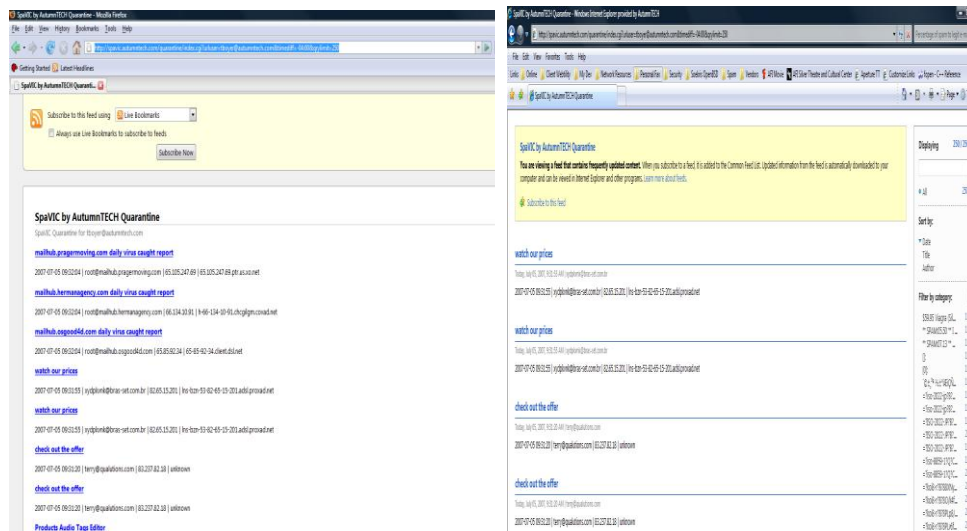
In addition to requesting digestreports through e-mail, recipients may subscribe to their queue through Real Simple Syndication (RSS) feeds. RSS feeds are becoming more popular for the ability to deliver content independent of the e-mail client, operating system, or device used.

The following URL will subscribe recipients to their feeds:

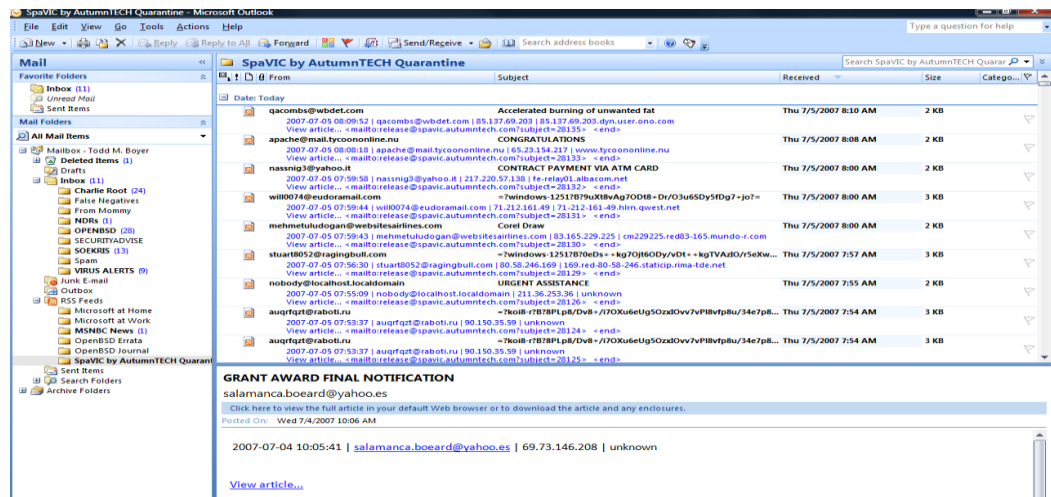
http://(thespavichostname)/quarantine/index.cgi?urluser=therecipientemailaddress&timediff=-04:00&qrylimit=250

The first argument urluser contains the complete e-mail address of the recipient. The second argument timediff contains your timezone info in comparison to current GMT time. In our example, -04:00 is the time difference between GMT and Eastern Daylight Time. The final argument qrylimit sets how many records to return in the query which is sorted by date and time received in descending order.

The above link can be viewed through the latest web browsers available from Microsoft and Mozilla Firefox, examples of the output are below:



RSS Feeds are available by default in Outlook 2007, for previous versions of Outlook you can search for and download "RSS Popper". Check your e-mail client's help documentation for additional instructions.



Display within the RSS reader may differ from client to client, the most important link is the link that composes a new e-mail

Admins Requesting Through a Webtility Search

SpaVIC administrators can search and release from the SpaVIC queues through Webtility > Advanced > Search and Release from the SpaVIC Queue. In addition, administrators can generate recipient RSS feeds through Webtility > Request a SpaVIC RSS Queue. Finally, configuration of the resulting digestreport e-mail requests can be changed through Webtility > Update Configuration Settings.

Bulk Domains

The Webtility Bulk Domain tool allows administrators the ability to limit the trust between senders and recipients to specific e-mail addresses. The default behavior is when a recipient trusts a sender; they trust everyone in that sender's domain. This relationship works extremely well with domains that spammers cannot establish an e-mail account on. Free e-mail providers are often used to send spam through, the bulk domain tool eliminates the "everyone" at the domain behavior if the domain is listed. The rule to follow is simple, if a spammer can create a legit account on that domain, the domain should be listed in bulk domain.

Reporting

Use the Webtility Home page and Advanced page links to the e-mail traffic reports to monitor the health of your SpaVIC server.

Logs

Use the Webtility links in the Advanced page under logs to watch in real time the traffic output from your running SpaVIC server.

Updating

Updating your SpaVIC server requires that you license your SpaVIC server in addition to a separate update license purchase. See <http://www.SpaVIC.com> for complete instructions.

Licensing

SpaVIC is shipped with a demo license that is good for 30 days worth of e-mail records or a total of 31,000 stored records. Afterwards, SpaVIC's e-mail server will stop and the ability to receive e-mail through SpaVIC will cease.

To license SpaVIC, copy the license hash shown at the top of any of the Webtivity pages and link to <http://www.SpaVIC.com> Use the hash during the order process. Once your order has been received, you will receive a license key which will unlock SpaVIC immediately. Enter your license key in Webtivity > Advanced > Update SpaVIC Configuration Settings.

License keys are generated on the fly for each running SpaVIC server and cannot be transferred. You must purchase a separate license for each SpaVIC server.

Recovery of a license key can be performed for a fee. Go to <http://www.SpaVIC.com> for additional details.

Support

SpaVIC is supported through online knowledge bases, e-mail requests to Support@SpaVIC.com and this documentation. Telephone support is available for a fee; go to <http://www.SpaVIC.com> for additional details.

Acknowledgments

SpaVIC by AUTUMNTECH appliances are distributed with GPL licensed software. To request copies of the current GPL source code, send a written request to SpaVIC by AUTUMNTECH LLC/ATTN SC/1711 Forest Glen Road/Silver Spring, Maryland 20910-1409.

SpaVIC by AUTUMNTECH makes no claim of ownership for included GPL licensed software which is excluded from copyright notices posted for SOFTWARE PRODUCT. You are free to distribute GPL licensed software in accordance with the licensing terms found at:
<http://www.gnu.org/licenses/licenses.html>

End-User License Agreement

WEBTIVITY

END-USER LICENSE AGREEMENT FOR SpaVIC by AUTUMNTECH SOFTWARE

IMPORTANT-READ CAREFULLY: This SpaVIC by AUTUMNTECH End-User License Agreement ("EULA") is a legal agreement between you (either an individual or a single entity) and SpaVIC by AUTUMNTECH LLC for the SpaVIC by AUTUMNTECH software product identified above, which includes computer software and associated media and printed materials, and may include "online" or electronic documentation ("SOFTWARE PRODUCT" or "SOFTWARE"). By installing, copying, or otherwise using the SOFTWARE PRODUCT, you agree to be bound by the terms of this EULA.

SOFTWARE PRODUCT LICENSE

The SOFTWARE PRODUCT is protected by copyright laws and international copyright treaties, as well as other intellectual property laws and treaties. The SOFTWARE PRODUCT is licensed, not sold.

1. GRANT OF LICENSE. This EULA grants you the following limited, non-exclusive rights: Software Product. You may install and use one running instance of the SOFTWARE PRODUCT on one computer. Each concurrent instance of SOFTWARE PRODUCT requires a separate license available for purchase at <http://www.SpaVIC by AUTUMNTECH.com>. You may not copy the SOFTWARE PRODUCT. You may redistribute the SOFTWARE PRODUCT if you are an Authorized SpaVIC by AUTUMNTECH Reseller and the reseller contract is valid and in full compliance at the time of the distribution.

2. COPYRIGHT. All rights, title, and copyrights in and to the SOFTWARE PRODUCT (including, but not limited to, any images, photographs, animations, video, audio, music, text, and "applets" incorporated into the SOFTWARE PRODUCT) and any copies of the SOFTWARE PRODUCT are owned by SpaVIC by AUTUMNTECH or its suppliers. The SOFTWARE PRODUCT is protected by copyright laws and international treaty provisions. Therefore, you must treat the SOFTWARE PRODUCT like any other copyrighted material, except that you may either (a) make one copy of the SOFTWARE PRODUCT solely for backup or archival purposes or (b) install the SOFTWARE PRODUCT on a single computer, provided you keep the original solely for backup or archival purposes. You may not copy the printed materials accompanying the SOFTWARE PRODUCT.

3. PRERELEASE CODE. The SOFTWARE PRODUCT may contain PRERELEASE CODE that is not at the level of performance and compatibility of the final, generally available, product offering. These portions of the SOFTWARE PRODUCT may not operate correctly and may be substantially modified prior to first commercial shipment. SpaVIC by AUTUMNTECH is not obligated to make this or any later version of the SOFTWARE PRODUCT commercially available.

4. DESCRIPTION OF OTHER RIGHTS AND LIMITATIONS.

Limitations on Reverse-Engineering, Decompilation, and Disassembly. You may not reverse-engineer, decompile, or disassemble the SOFTWARE PRODUCT, except and only to the extent that such activity is expressly permitted by applicable law notwithstanding this limitation.

Rental. You may not rent or lease the SOFTWARE PRODUCT.

Software Transfer. You may not transfer any right under this EULA

Termination. Without prejudice to any other rights, SpaVIC by AUTUMNTECH may terminate this EULA if you fail to comply with the terms and conditions of this EULA. In such event, you must destroy all copies of the SOFTWARE PRODUCT and all of its component parts.

5. EXPORT RESTRICTIONS. You agree that neither you nor your customers intend to or will, directly or indirectly, export or transmit (a) the SOFTWARE PRODUCT or related documentation and technical data, or (b) your Application as described in Section 1 of this EULA (or any part thereof), or process, or service that is the direct product of the SOFTWARE PRODUCT to any country to which such export or transmission is restricted by any applicable U.S. regulation or statute, without the prior written consent, if required, of the Bureau of Export Administration of the U.S. Department of Commerce, or such other governmental entity as may have jurisdiction over such export or transmission.

6. U.S. GOVERNMENT RESTRICTED RIGHTS. The SOFTWARE PRODUCT and documentation are provided with RESTRICTED RIGHTS.

Use, duplication, or disclosure by the Government is subject to restrictions as set forth in subparagraph (c)(1)(ii) of The Rights in Technical Data and Computer Software clause at DFARS 252.227-7013 or subparagraphs (c)(1) and (2) of the Commercial Computer Software - Restricted Rights at 48 CFR 52.227-19, as applicable. Manufacturer is SpaVIC by AUTUMNTECH LLC/1711 Forest Glen Road/Silver Spring, Maryland 20910-1409.

7. SpaVIC by AUTUMNTECH appliances are distributed with GPL licensed software. To request copies of the current GPL source code, send a written request to SpaVIC by AUTUMNTECH LLC/ATTN SC/1711 Forest Glen Road/Silver Spring, Maryland 20910-1409. SpaVIC by AUTUMNTECH makes no claim of ownership for included GPL licensed software which is excluded from copyright notices posted for SOFTWARE PRODUCT. You are free to distribute GPL licensed software in accordance with the licensing terms found at <http://www.gnu.org/licenses/licenses.html>

MISCELLANEOUS

This EULA is governed by the laws of the State of Maryland.

Should you have any questions concerning this EULA, or if you desire to contact SpaVIC by AUTUMNTECH for any reason, please contact the SpaVIC by AUTUMNTECH subsidiary serving your country, or write: SpaVIC by AUTUMNTECH Customer Sales and Service/1711 Forest Glen Road/Silver Spring, Maryland 20910-1409.

NO WARRANTIES. To the maximum extent permitted by applicable law, SpaVIC by AUTUMNTECH expressly disclaims any warranty for the SOFTWARE PRODUCT. The SOFTWARE PRODUCT and any related documentation are provided "as is" without warranty of any kind, either express or implied, including, without limitation, the implied warranties of merchantability or fitness for a particular purpose. The entire risk arising out of use or performance of the SOFTWARE PRODUCT remains with you.

LIMITATION OF LIABILITY. SpaVIC by AUTUMNTECH's entire liability and your exclusive remedy under this EULA shall not exceed five dollars (US\$5.00).

NO LIABILITY FOR CONSEQUENTIAL DAMAGES. To the maximum extent permitted by applicable law, in no event shall SpaVIC by AUTUMNTECH or its suppliers be liable for any damages whatsoever (including, without limitation, damages for loss of business profit, business interruption, loss of business information, or any other pecuniary loss) arising out of the use of, or inability to use, this SpaVIC by AUTUMNTECH product, even if SpaVIC by AUTUMNTECH has been advised of the possibility of such damages. Because some states/jurisdictions do not allow the exclusion or limitation of liability for consequential or incidental damages, the above limitation may not apply to you.