

Build The Real McTube by Fred Nachbaur. Visit his website for more information on the Real McTube and other great projects: <http://www.dogstar.dantimax.dk/tubestuf/mctube.htm>. Isolate jacks from enclosure and ground enclosure to one point. Off board components except for the potentiometers are not shown on the layout. Trademarks remain property of their owners.

Parts List

Resistors

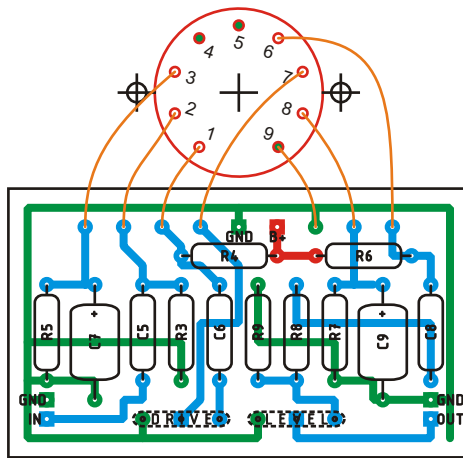
- R1 - 2k2
- R2 - 12 ohm 2W *
- R3 - 1M
- R4 - 330k ½W
- R5 - 15k
- R6 - 680k
- R7 - 4k7
- R8 - 1M
- R9 - 100k
- R10 - 470 ohm ½W

Pots

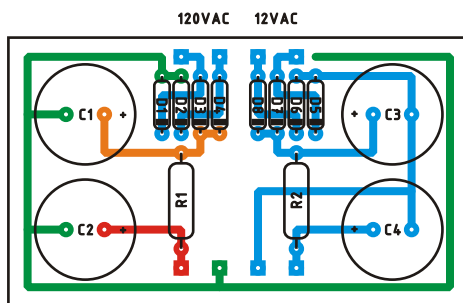
- RV1 - 500k Log
- RV2 - 500k Log

Capacitors

- C1 - 33µF / 160v
- C2 - 33µF / 160v
- C3 - 2200µF / 16v
- C4 - 2200µF / 16v
- C5 - 0.01µF / 50v
- C6 - 0.02µF / 200v
- C7 - 100µF / 16v
- C8 - 0.02µF / 200v
- C9 - 100µF / 16v



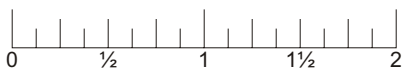
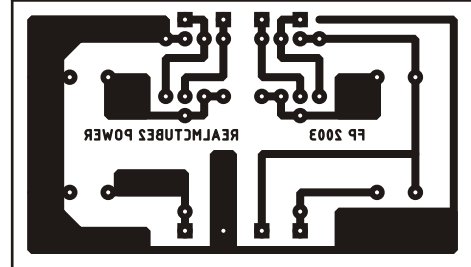
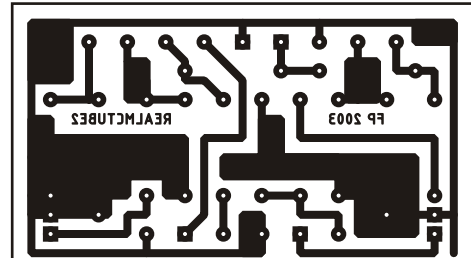
LAYOUT



B+ GND FILAMENT

Notes:

- * R2 is reclining on one of it's ends, because of it's size it doesn't lay flat on the board.
- Use DPDT switch for bypass.



READY TO TRANSFER

Schematic

