

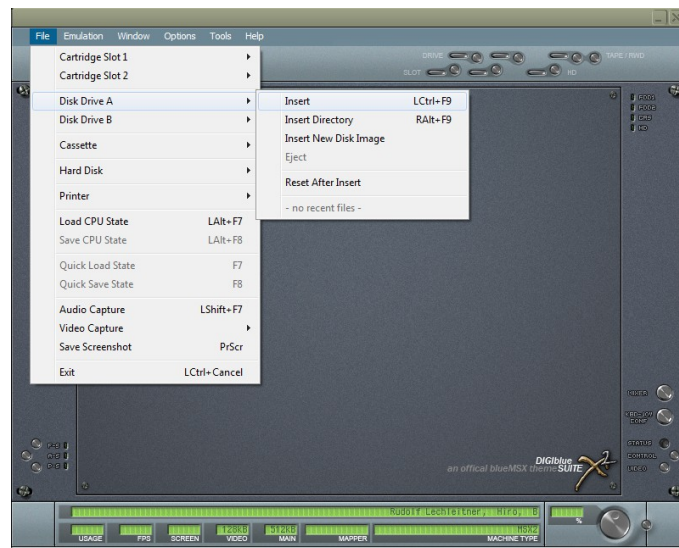
The best option would be openMSX, but it's a little bit complicated to configure.

Another good choice, in Windows, would be BlueMSX. It can be downloaded in this address:
http://bluemsx.msxblue.com/rel_download/blueMSXv282full.exe



The default configuration can load disk images.

The disk image can be loaded from File → Disk Drive A → Insert, and choosing the file SnailRally.dsk



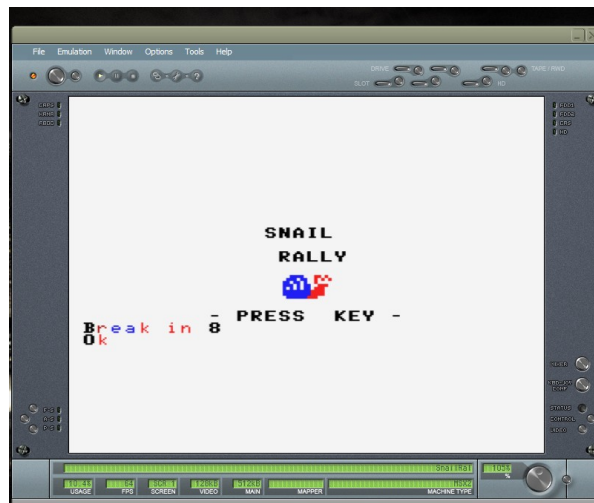
After that, press F9 or the big round button:



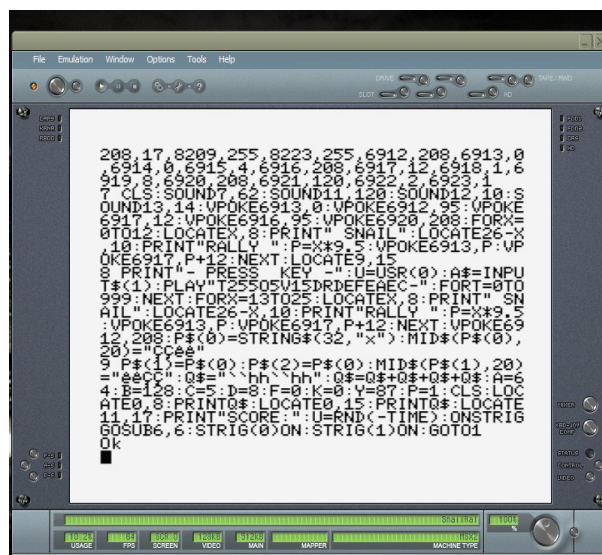
The game in the disk image will load automatically:



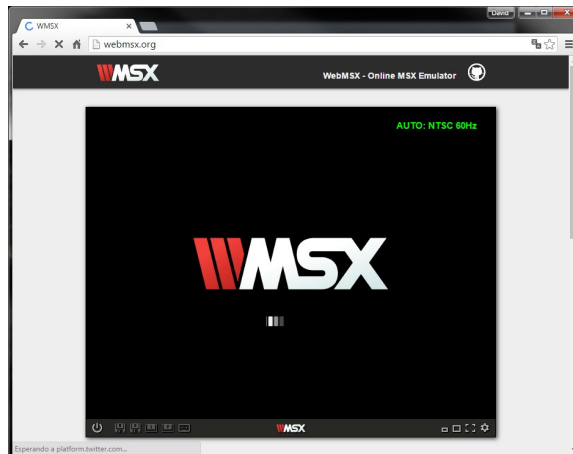
For stopping the game and check the code, we need to press [left ctrl] + [page up] simultaneously (it's ctrl + stop in a real msx). This will break the program.



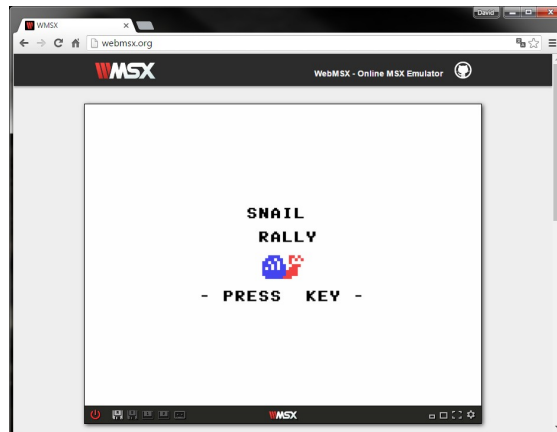
Then I recommend write the commands **SCREEN 0**, and after that **WIDTH 40**, to active the 40 columns mode. Then writing the command **LIST**, as usual, the code will show:



Another easier option would be use the online emulator <http://webmsx.org>, although the sound is emulated a little bit messy. This emulator works in Firefox and Chrome.



For loading the program, it's enough dragging the SnailRally.dsk file into the emulator, and then pressing F11 twice to reset the emulator. The game will load automatically



For stopping the game and check the code in this emulator you have to press the combination of keys [Left Ctrl] + [Pause/Break]



Now we can write the same commands that in blueMSX, to check the code (*screen 0* and *width 40* to active the 80 columns mode, and *list* to show the code):

A screenshot of the WebMSX Online MSX Emulator interface. The browser window shows the URL 'webmsx.org'. The emulator's title bar reads 'WebMSX - Online MSX Emulator'. The main display area shows a list of assembly instructions in a monospaced font. The instructions are numbered from 200 to 217. The code includes various MSX assembly instructions such as 'CLS', 'SOUND', 'VPOKE', 'LOCATE', 'PRINT', 'PUSH', 'POP', 'STRIG', and 'ON'. The instructions are displayed in a single column, with line numbers on the left and the instruction text on the right. The emulator's status bar at the bottom shows the 'MSX' logo and some system icons.

```
200 17:8209,255,8223,255,6912,208,6913,0
201 17:8209,255,8223,255,6912,208,6913,0
202 17:8209,255,8223,255,6912,208,6913,0
203 17:8209,255,8223,255,6912,208,6913,0
204 17:8209,255,8223,255,6912,208,6913,0
205 17:8209,255,8223,255,6912,208,6913,0
206 17:8209,255,8223,255,6912,208,6913,0
207 17:8209,255,8223,255,6912,208,6913,0
208 17:8209,255,8223,255,6912,208,6913,0
209 17:8209,255,8223,255,6912,208,6913,0
210 17:8209,255,8223,255,6912,208,6913,0
211 17:8209,255,8223,255,6912,208,6913,0
212 17:8209,255,8223,255,6912,208,6913,0
213 17:8209,255,8223,255,6912,208,6913,0
214 17:8209,255,8223,255,6912,208,6913,0
215 17:8209,255,8223,255,6912,208,6913,0
216 17:8209,255,8223,255,6912,208,6913,0
217 17:8209,255,8223,255,6912,208,6913,0
```